



Volume 24 Issue 9

September 08

Guild Meetings:

**New Location**

9701 W 67th St

Merriam, Ks 66203

**Big Ticket Raffles**  
**Freud Plunge Router**  
**or Eagle Jig Router**  
**Wizard**

**DIRECTORS-OFFICERS:**

**President:** Mike Jones  
(816)204-6406  
mike8227@sbcglobal.net

**Vice President:** John Johnson  
(913) 642-0054  
johnsonje@bv.com

**Secretary:** Shelly Taylor  
(913) 363-0708  
toushay929@gmail.com

**Treasurer:** Aaron Menning  
(913) 707-1000  
aaron@menning.com

**Events:** Roger Grout  
(913) 829-4654  
rkgrou@sbcbglobal.net

**Communication:** Kevin Thomas  
(816) 941-8865  
kv1014@sbcglobal.net

**Sponsorship:** Kevin McAndrew  
(913) 381-5714  
mcan4954@att.net

**Membership:** Wayne Suter  
(816) 916-6230  
wlsuter@kc.rr.com

**Training:** Kara Paris  
(816) 682-5622  
karaparis@sbcglobal.net

**Education:** Bill Evans  
(816) 847-2318  
billevansgv@aol.com

**Video:** Don Kruse

**Books:** George Rexroad

**Editor:** Kevin Thomas

kv1014@sbcglobal.net

**Webmaster:** William Johnston  
johnston@everestkc.net

# Wood Words

Kansas City Woodworkers Guild [www.kcwoodworkersguild.org](http://www.kcwoodworkersguild.org)

**September Raffle:** Bill Evans will have his usual assortment of items

**Next Meeting: Wed. September 17th, 7:00pm**  
**Program:** Segmented Bowls with Jay Helland of the Lee's Summit Woodworkers Guild

## **Sawdust:** **The Presidents Corner**

*Mike Jones*

It is hard to believe that September is already here. The kids are back at school, nights are getting cooler and we are enjoying one of the mildest Augusts on record. If that isn't enough, the Guild has moved forward with acquiring some new equipment. By the time you will be receiving this newsletter, we will have taken delivery on 4 new pieces of equipment from Steel City Toolworks.



I don't know about all of you, but I am really excited to be taking our Guild to this next level. The idea of being able to do demonstrations, workshops and projects at our new club location just about gives me goose bumps! Even more exciting is the fact that we have Kelley Mehler coming in November and Marc Adams coming in October of 2009. We are realizing a lot of dreams in the next couple of months.

We are about to close the book on the Andre's project

with the on-going work on the booth benches. As we prepare to deliver those finished benches to Marcel by the holiday season, it is appropriate to remember how thankful we are for the opportunity that has allowed us to move to this next level in our history.

I want to thank all of our preceding leadership teams for their inspiration and commitment to our Kansas City Woodworkers Guild. I especially want to thank Chris Kuzzle for being our contact person with Andre's and also for being the one to convince Marcel to have us do this project. The future of our Guild will be forever connected to and thankful for Chris's dedication and involvement.

As we get closer to the holiday season, please start giving some thought to what you might want to do to participate in the 2x4 contest at the Christmas party. Better yet, I would like to see everyone giving some thought to how they can get involved in one of our

*(Continued on page 2)*

PLEASE PATRONIZE OUR  
**SPONSORING MEMBERS**



[www.Shop.MontereyWoods.com](http://www.Shop.MontereyWoods.com)



**Home Storage Solutions**  
(816) 916-6230



**Elmwood Reclaimed Timber**  
(816) 532-0300



**Liberty Hardwoods**  
(816) 231-0852



**Paxton Woodcrafters**  
(816) 483-0659



**PlansNow**  
[www.PlansNOW.com](http://www.PlansNOW.com)



**Schutte Lumber**  
(816) 753-6262



**Strasser Hardware**  
(816) 236-5858



**Klockit**  
800 556-2548



**Wood By Design**  
(913) 962-0159



**Woodcraft Supply**  
(913) 599-2800



**Woodline**  
(800) 472-6950



**Microplane**  
800 555-2767



**Ozark Lumber**  
479 253-5994



**Hartville Tools**  
[www.hartvilletool.com](http://www.hartvilletool.com)



**Klingspor's**  
[www.woodworkingshop.com](http://www.woodworkingshop.com)



**Metro Hardwoods, Inc.**  
(816)373-1710



**Cedar Creek Sawmill**  
(913)638-1173

many committees that will allow us to get our club space finished out, laid out, planned and electrified. Please give some thought to how you can contribute one of your many talents to the betterment of our Guild.

We still have to build the bases for our workbenches and it would be nice to have some cabinets installed for storage. We have a nice start with the two cabinets that Ron LeMaster donated from the Arnold-Newbanks cabinet shop, not to mention the fantastic router tables and routers we picked up there. Our thanks go out Jim Bany and his brother-in-law Neville (who came all the way from Australia) and Kevin Thomas for meeting me down at Arnold-Newbanks Company to pick up those items we purchased.

I would have to say that half of the fun and enjoyment of my Guild membership has turned out to be the amazing friendships that I have developed with many of you. I am looking forward to many successful project work sessions that will be held in our new shop. By the way, Kevin is leaving for Berea, Kentucky in another couple of weeks to attend a weeklong workshop on how to build a European style workbench. I am looking forward to Kevin bringing us his newly acquired know-how and doing a presentation on what he learned. I have wanted to build a workbench like this for years. Take lots of notes, Kevin! I hope to see you all in September and I will see you in the shop!

### The Andre's Table and Bench Diaries

By Shelly Taylor

All tables in the Andre's Project have been completed and we're now going full steam ahead with the benches.

The types and number of benches needed are as follows:  
Six 2x2 (accommodates two people on one side of the bench and two people on the other)

Seven 2x0 (accommodates two people on one side of the bench)

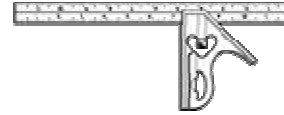
One 1x0 (accommodates one person on one side of the bench)

One 1x2 (accommodates one person on one side of the bench and two people on the other)

One 2x1 (accommodates two people on one side of the bench and one person on the other)

John Johnson's team leaders will first build one 2x2 bench to fine tune the process. The team leaders have been assigned various bench parts to take home and they'll de-

velop any jigs necessary to the building of the benches. Once the "bugs" are worked out on this first bench, team leaders will need volunteers so that mass production can begin on the remaining benches. Hopefully, we'll have our Guild workshop up and running to produce the benches on site. The deadline for the benches is set for the December holiday season.



### August's Program: Annual Safety Program with Chuck Slagle

By Shelly Taylor

Chuck Slagle gave an excellent presentation on safety at the August meeting. He spoke to us about the Personal Protective Equipment that every woodworker needs to protect eyes and face, hands and skin, lungs, and ears.

Workshop safety actually begins with your attitude. Jim Bany sits down in his shop before starting to work and makes a conscious effort to get himself into a safe frame of mind and to be totally in the present-- thinking only about what he's going to be doing and nothing else. Assess the risks. What will you be working on today and what personal protective equipment do you need to be safe? If you're putting a finish on something, you'll need respiratory and hand protection. If you're operating a noisy piece of equipment and kicking up dust, you'll need eye, ear and respiratory protection. Minimize as much as possible any injury that might happen.

Let's begin with eye protection. It must be adequate to protect against the particular hazards of your shop and needs to be comfortable with a snug fit, durable, and easy to clean. Safety glasses can have a prescription or not (plano), and can be clear or tinted. They must be made to ANSI standards to be designated as safety glasses (not just FDA approved) and you'll see that the glasses are marked with a Z87 on the temple or lens. Also keep in mind that lenses made of polycarbonate are better than those made of plastic. Another option, and one that is less expensive than safety glasses made with a prescription, is to purchase safety glasses to simply fit over your prescription eyewear.

Chuck warned us that safety glasses do not provide enough protection against hazards involved in handling chemicals. In this case, chemical goggles are necessary as they are

made to prevent splashed chemicals from penetrating the goggles. In fact, your entire face needs protection from splashes as well as anything that produces sparks or chips. In all of these situations, wear a face shield over your protective eyewear.

Next, Chuck talked about protecting the skin of your hands when moving wood or using chemicals. Wear gloves! If you're moving wood, you need to protect your hands from cuts, punctures, scrapes and abrasions. If you're using chemicals, Chuck recommends gloves made of nitrile as opposed to those made of latex or vinyl as the latter tends to break down with chemical use. Chuck uses a thin nitrile glove to aid in dexterity. Powdered gloves are available to help with easy removal. Barrier creams, meanwhile, can be used when gloves can't be worn due to a need for fine dexterity and act as an invisible shield between the product you're using and your skin.

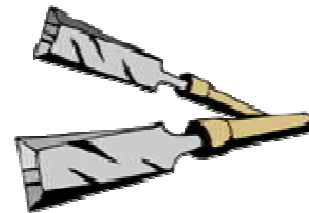
Another part of your body to protect against the wood-working hazards of dust, vapors, and fumes is your respiratory system. Disposable dust respirators are a simple dust mask that only protects you from large pieces of dust and nothing else. Air-purifying respirators, along with powered air-purifying respirators (PAPR) containing a motor that sucks air through the filter and out, protect against finer dust particles. For vapor and fume protection, Chuck recommends wearing a quarter, half, or full face air-purifying respirator with a cartridge. And if you have a beard, or even stubble, shave! It is not possible to get the good seal that you need with the presence of any facial hair.

Finally, you need to protect your hearing from the hazard of excessive noise. Ear plugs and ear muffs are available to isolate the human ear from harmful noise levels and a noise reduction rating is required by law on every kind of noise protection product. The higher the number rating, the greater the noise protection. Chuck warned us, however, that the rating is a bit of a misnomer and needs to be derated due to the function of audiometric dynamics. He recommends that the protection rating be derated as follows: 25% for earmuffs and 50% for foam ear plugs. So keep this in mind when you are figuring how many decibels your shop produces and comparing it to the decibel protection of muffs or plugs -- derate the decibels as mentioned. For example, Chuck uses earmuffs in his shop that generates some 100 to 110 decibels of noise. He derates the shop decibels by 25%, bringing the protection down to

75 - 80 decibels. Also beware of combining two kinds of ear protection, for example, ear plugs and ear muffs, thinking that by adding the ratings together you'll get that much more protection. Chuck told us that it simply doesn't work that way and that you only get a 5 decibel increase in noise protection in any combination effort.

If you choose to use foam ear plugs for your work, make sure that you insert them properly or they will be ineffective. Don't just push them in -- rub the plug in your palms, twist it and then put it in. The foam will expand a bit in your ear, making for a snug and protective fit. Another ear plug option are semi-inserted ear plugs attached to a head band especially designed for moving in and out of high noise areas and are easy to put on and remove quickly.

Chuck ended his presentation on safety by reminding us to always keep personal protective equipment clean and in good repair and mentioned two local resources for safety products and information. One is Wise Safety and another is Orr Safety. Another resource for more information is our very own Guild website. Click on the Education tab and then click on Safety to access several articles that Chuck has contributed to the site. Thanks, Chuck, for sharing your knowledge and expertise on the important subject of Personal Protective Equipment and workshop safety.



## TREASURY REPORT

(September 2008)

**Beginning Balance-** \$28302.66

**Income-** \$331.00

**Expenses-** \$ 4886.71

**Ending Balance-** \$23746.95

**Paid Members--**

**Senior-32**

**Regular-61**

**Associate-- 6 , Sponsor-- 4**

**Total Members-- 103**

### Show and Tell August 2008



**B. Varney** - "On the Prowl"  
Scroll-sawn Picture



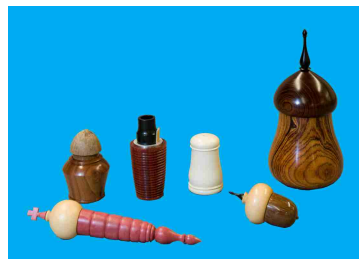
**Cliff Bell**- Tournament Chess  
Board



**David Roth**- More great  
Intarsia works



**Russ Amos**- Lotus Award  
and Award Box



**Anthony Harris**- Assorted  
Turned Boxes

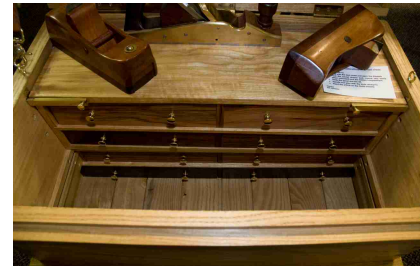


**Jerry Jennings**- Walnut,  
Cherry, and Maple Intarsia  
cross

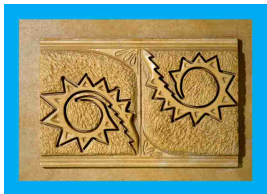


**John Tegeler**- Pine sliding top Box and a Bench Hook with miter slots

### More Show and Tell



**William Johnston**– Dovetailed tool box with assorted tools he has made.  
For more info on this project, see our website.



**Fred Stubenrauch**- CNC carved Navajo designs in MDF



**Arnold Baker**– Walnut Tooth Fairy Boxes



**Russ Amos**– Router profile steps



**Kevin Thomas**– Painted Pine Toy Box



**Ron Lomax**– Inlaid Coasters

## Member of the Month Jim Stuart



**What is your specialty in woodworking?** Not really specialized. I make furniture pieces, toys for grandkids, home-improvement projects and lots of mistakes.

**How many years have you been woodworking?** I can't remember for sure, but I bought my first table saw of my own when I was 18 yrs. Old.

**What is your favorite hand tool and why?** It might be my 18" metal rule. It allows me to make very accurate measurements, and without an accurate measurement, there is no chance to make an accurate cut

**What is your favorite wood to use and why?** I build a lot out of walnut because I have a good supply of it. I also build a lot out of red oak.

**What is the most favorite project you have built and why?** Probably the bar and back bar in our game room. Not only did it turn out very nice, it is a favorite hang-out for guests.

**What is the best deal you have gotten on a woodworking tool?** All of the hand-me-downs from my father. Not only did I get good tools, the learning that came with them has lasted me a lifetime.

**What has been your favorite guild activity?** I enjoy working on the habitat houses, and I really enjoyed helping with the Andre' tables.

**What shop tip can you give us?** Keep your fingers out

of the table saw!!!!

**What safety tips can you share with us?** When a technique feels unsafe, it probably is. But be sure to think through the one you change to

**Blanket Chest**



**Jim's Bar**

**Pie Safe with Punched Copper Panels**



**Poker Table**

## Antique Tool of the Month

By Don Kruse

The antique tool for this month was patented by a Manual Training teacher at the Boy's High School in Brooklyn. Patent No. 842453 was granted to Edwin W. Foster of Central Park, Long Island, New York on January 29, 1907. All of the planes of this type have blades marked with the Ohio Tool Co. logo and other features of the planes indicate that they were manufactured by that firm. The marketing agent for the plane was the Oliver Woodworking Machinery Co. of Grand Rapids, Michigan.

The unique feature of this plane is the capability to adjust the skew of the blade. This enables the plane to be used with the grain, across the grain or on end grain. This is accomplished by attaching the frog to a portion of the sole that pivots like a turntable. In fact it is known as Foster's Turn Table Plane. The plane is 9 3/4" by 2-11/16" with a 2" wide blade. The extra width was needed for the rotation mechanism. As with most planes that are produced in one size only, you hear of someone having one of a different size. I have heard of one of these 14" long but have never seen it or pictures of it. These planes are fairly scarce, so probably only one production run was produced.

Edwin Foster also published a textbook named "CARPENTRY AND WOODWORK" while he was Secretary of the Dept. of Science and Technology at Pratt Institute, Brooklyn, N.Y.

Ref: Patented Transitional & Metallic Planes in America 1827-1927 Vol. I by Roger K. Smith



## Meeting Minutes– August 20th, 2008

### News / Business:

William Johnston has proposed the idea of Special Interest Groups (SIGs). A SIG would consist of a small group of members who share a particular interest in a tool or process and would like to get together, talk shop, and further their special interest. An ideal group would have several members (2 to 7), some of who are beginners, and hopefully a mentor with expertise in the special interest. Two groups are initially being proposed as Special Interest Groups: "Shopsmith Users" and "Hand Tool Woodworking- Collecting, Acquiring, Tuning, and Using Hand tools." Please let Bill know if you are interested in either or both of these and/or what Special Interest Group you would like to see formed. He will compile the information that he receives and report back. As time and interest dictate, a meeting will be set up to form the groups - probably just before the regular Guild meeting. SIGs can then set other meeting times as fits the needs of their members. Contact Bill at [johnston@everestkc.net](mailto:johnston@everestkc.net) or [webmaster@kcwoodworkersguild.org](mailto:webmaster@kcwoodworkersguild.org).

Mike Jones reported that a woodturning demonstration class featuring Jimmy Clewes, an internationally known wood turner from England, will take place on Saturday, September 13. The cost for the class is a bargain at \$20. Contact the Woodturners Guild if you're interested in attending. You can also learn more about Jimmy Clewes on his website at [www.jimmyclewes.com](http://www.jimmyclewes.com).

Kara Paris passed a sign-up sheet around denoting several committees that the Board hopes offers a way for every member to get involved in supporting the Guild in some way. One committee is needed to work on our new location - walls need to be finished and painted; electrical work needs to be done; the shop needs to be organized. Another committee is needed to work on the Guild by-laws. We also need a committee to work on fundraising and come up with ways to generate revenue, as well as to plan and organize money-making presentations. A training committee the Board calls "Training the Trainer" is needed so that members are trained on specific techniques that they can then demonstrate at the next woodworking show. There is a way for every Guild member to contribute, so figure out which way works best for you and join in!



P.O. Box 413922  
Kansas City, MO. 64141

## Meeting Minutes August 20th, 2008

(Cont'd)

Aaron Menning reported on the Guild's state of finances. Currently, the Guild has approximately \$25,000.00 in our checking account. We have some \$3000.00 of expenses remaining in building the Andre's benches and will receive a final payment of \$12,000.00 for our work for Andre's in December. At that time, we will have \$34,000.00 and will set aside an amount of \$18,400.00 in a savings account to gain interest, leaving \$15,900.00 in our checking account.

Mike Jones reported on the equipment the Board proposes to buy to begin establishing our very own workshop in our new location. A 20% off the summer sale price deal was worked out with the rep at Steel City for the following four pieces of equipment: A table saw with 5hp and a 15 inch extension; a 2hp jointer; a drill press; and an 18 inch bandsaw. The total price of \$4,000.00 is within the 2008 budget set aside for this purpose. In 2009, a new budget will be established in order to continue equipping our workshop with more tools, such as a planer. The Guild members agreed to purchase the initial four tools

### Visitors

Jim Bany's brother-in-law, **Neville**, came all the way from Australia. **Bert** from Leawood learned about the Guild on the Internet and came to the meeting.

**Fred Stubenrauch** who has a copper finishing business in Merriam, Kansas, came to the meeting and brought copper samples to show.

### **Raffle:**

Tickets are still being sold for two White Ticket raffle items, a **Freud 3.5 hp Plunge Router** and **Eagle Jigs Router Wizard**. These items will be raffled when 100 White Tickets are sold at \$5 each.

### Red Ticket Raffle

**Jim Reynolds** - Cherry Wood

**Larry Morse** - Microplane and Ear Muffs

**Bob Ray** - Hole Saw Kit

**Bill Kidder** - 24 inch Ruler and Rosewood

**John Zwiegel** - 2 piece Antique Tool Set and Clamps

### Calendar

Executive Meetings, 7:00pm Kansas City Public Library 1410 W 10th St. KC MO 64105

Guild meetings, 7:00 pm 9701 W 67th St Merriam, Kansas 66203 In the Basement

#### Executive Meetings

#### Guild Meetings

2008

January 2nd  
February 6th  
March 5th  
April 2nd  
May 7th  
June 4th  
July 2nd  
August 6th  
September 3rd  
October 1st  
November 5th  
December 3rd

January 16th  
February 20th  
March 19th  
April 16th  
May 21st  
June 18th  
July 16th  
August 20th  
September 17th  
October 15th  
November 19th  
December 17th

All members are welcome at any board meeting. A call to one of the Officers is all that is necessary.

**Aaron Menning** - Curly Maple Wood

**Kevin Thomas** - "Clamp It" Assembly Square

**Terry Stair** - Frame Clamp

**Kara Paris** - Screwdriver Set

**Bill Bysel** - Japanese Pull Saw

**Dale Wilson** - Safety Glasses

Thank you to all of the sponsors who keep our woodworking raffle going!

(Editor's Note)

Due to space considerations this month, Show and Tell Descriptions are limited to the pages 4 and 5. There's just so much going on to tell you about, that we ran out of room for the detailed descriptions. Thanks to all that brought in their great projects for Show and Tell.

The Editor