



Wood Words

Kansas City Woodworkers Guild www.kcwoodworkersguild.org

Volume 22 Issue 7

September 04

Guild Meetings:
Jacob's Well Church,
1617 W. 42nd St.,
KC Mo. 64111

Jim Bany's
Habitat for Humanity
Sept 9th, 10th 11th
Sept 16th, 17th, 18th

DIRECTORS-OFFICERS:

President: Wayne Wainwright
816 453-1073
wrrig@kc.rr.com

Vice President: Wayne Suter
816 628-4602
wlsuter@earthlink.net

Secretary: Dave Roth
913 338-2433
chefroth@everestkc.net

Treasurer: Paul Twenter
816 781-9407
paul@twenter.com

Events: Mike Jones
816 204-6406
sportsturf@kc.rr.com

Communication: Brian Kemp
816 455-8892
b.kemp@earthlink.net

Sponsorship: Neal Shoger
816 781-4000
nrshoger@swbell.net

Membership: Terry Stair
816 765-7296
tandkstair@aol.com

Training: Ken Sokol
913 441-6060
kensokol@yahoo.com

Education: Chuck Slagle
913 402-8336
slaglecs@earthlink.net

Video
Don Kruse

Books
George Rexroad

Editor/Web:
Wayne Wainwright

September Raffle: Chris will have his usual assortment of fine tools!

Please thank sponsoring members; noted below for supporting our Guild.

Next Meeting Wed. September 15th, 7 PM

Program: Woodworking Problems:
Q & A with Kraatz, Bany and Amos!

Sawdust: The Presidents Corner

Wayne Wainwright



As many of you know,

Jim Bany "is" doing the Habitat for Humanity project again this year.

They are in KCK on September 9th, 10th and 11th and again on September 16th, 17th and 18th. The location is: 800 Ferree St. around the corner from the American Legion post 188 on Osage (see page 4 for map).

If you wish to help, just show up at the site. They will be there from 8am - 4pm. Please bring the following:

Hammer
Tape
Nail Apron (tool belt)
Pencil

Lunch will be served and all are welcome. You can park in the American Legion Post 188 parking lot.

Please contact Jim if you have questions:

516 215-3302

A special notice from your Vice President:

This last month I had the opportunity to attend one of the Mentor Workshops.

What a blast! Even if I had come away without any new knowledge, the day spent with my fellow Woodworkers would have made it all worth it.

I did however, come away with new knowledge about how to do something in woodworking, and that just made for icing on the cake.

I guess what I'm trying to say for all of your benefit, is, "attend a Mentors' Workshop". I just can't imagine anyone not gaining some benefit from the experience.

Are you ready for the annual 2 X 4 contest? December will be here before you know it. I hope everyone will participate this year!

In celebration of our 20th anniversary, we are starting what I hope will become a new tradition. A "get together" for all members and their families. Specifics are being worked out but the

date has been set. October 16th. There will be food and drink and fun for all.

By the time you have read this, we will have conducted a "preview" of the training classes we

PLEASE PATRONIZE OUR SPONSORING MEMBERS



Paxton Woodcrafters
(816) 483-0659



PlansNow
www.PlansNOW.com



Schutte Lumber
(816) 753-6262



Turn-About-Wood
(816) 587-3195



Woodcraft Supply
(913) 599-2800



Elmwood Reclaimed Timber
(816) 532-0300



Professional Tool Mfg LLC
(913) 599-2800



Accent Merchandising
(816) 635-5792



The Framery
(913) 831-9411



Strasser Hardware
(816) 236-5858



Liberty Hardwoods
(816) 231-0852



Wood By Design
(913) 962-0159

are going to do at the Kansas City Public Library. Due to some marketing conflicts at the Library, the date has been moved to November, but 4 projects - A Basic Birdhouse (Wainwright), A Tea Caddy (Inbody), A Coat Rack and Shelf (Sokol) and a Squirrel Feeder (Stair) are slated to be taught.

Our Director of Training is putting the finishing touches on the program he presented to you last month. Soon we will be conducting regular training for our membership, enhancing skills and helping to resolve problems. Which brings me to the **September Program!**

I am very pleased to see this months program. **Dave Kraatz, Jim Bany and Russ Amos** will host a Q and Answer session for the membership.

These experienced and well seasoned veterans will answer your woodworking questions for the evening. Have a project you are working on or considering? Not sure how to start or do you have one single detail that is holding you up?

Bring your questions this month. You will find a wealth of knowledge available to you.

Toy Project:

Many of you have been busily making toys for the annual Toy Project. As an "addendum" to that activity, Woodcraft has kindly donated some shop space so we can get some additional activity done. September 18th will be another "big weekend" for us. We have their shop space available again and hope to make some extra toys.

We will announce the details at the next meeting, but put that date aside and come prepared to help make this years toy project a success.

As you may know, as an incentive, we are offering raffle tickets for bringing in someone and more for signing them up - see the "rules" posted at the sign-up desk at each of the Guild monthly meetings. Did not get your business cards or

need more? See Terry Stair at the next meeting you attend. See you on the 15th!

Program: Mac Dressler - The Dovetail Joint

David Roth

Mac gave great demonstrations on different applications on dovetails. There are several different types of dovetails. Mac walked us through the steps to make each type.

Some people cut the pins first when they make dovetails but if you are making a lot of them, it is best to do the tails first so you can stack them up when you are cutting them out. Mac likes to cut the tails first because it is easier to score the pins after the tails are cut.

He says it not that difficult to cut hand-cut dovetails; you just need to have the skill to use a hand-saw, and be able to cut to the line

Another important thing is to have a good marking gauge to put your score marks onto your wood.

Once you do that; basically you've got your joint made. Mac started showing and passing around different types of dovetails while he was giving his presentation.

The two most-used types of dovetails used are the through dovetails and half blind dovetails.

Another Joint he talked about was a sliding dovetail joint. This joint joins end to face or edge in making things like a chest of drawers. To hide the joint you can put trim on it or veneer.

The sliding dovetail joint is also good for attaching a three-legged post to a table. The sliding dovetail is a good strong joint but it is a little difficult if you make a stop joint with it.

Breadboard sliding dovetail is a good joint to make

on the table saw.

Dovetail Counter Batten: It not used that much in furniture making but is used a lot on large doors or large barn doors. This joints allows for shrinkage and expansion for doors that are outside in the weather.

Dovetail Halving joint is used in window and door framing. It works very well because you can tighten the joint as necessary when you need to. The only thing you need to do is drive the wedges up a little tighter.

Butterfly tenon. You can use this joint to join two boards edge to edge. It is also a good repair joint for cracks and splits in wood, so you can stabilize the wood. You usually repair it on the underside. But this joint can also be used for a decorative joint. The butterfly tenon is good to use especially if the wood swells up -- this joint will keep tight. This is a very good joint.

Dovetail halving joint is easier to make and is good for face framing or to join frame boards edge to edge.

Dovetail halving scarf joint is used in construction and the scarf joint can be used if you cut your wood too short. But that never happens to us wood woodworkers, now does it?

A **Dovetail Housing Joint** is a board that will lock that joint and will not pull out.

**Thanks Mac
for an excellent program**



Book Review

Art Howell

Building the Wooden Fighting Ship

This is woodworking on a gigantic scale! Many 17th and 18th century “first rate” Wooden Fighting Ships required up to 185,000 cubic feet (1.8 million board feet) of Oak and other woods to build a single ship.

This book describes in great detail, the curing, joining, shaping, bending and preserving required and the hand tools used to accomplish it. If you are a Patrick O’Brien (“Master and Commander”) fan, or are just interested in the historical aspects of woodworking and it’s tools, you will find this book fascinating.

For Sale

Radial Arm Saw: Craftsman, circa 1960, with stand on rollers, new table, operating parts and manual.

Maple, 2 pieces 12” wide X 2 “ thick X 8’ long. Paxton quotes \$6 bf for maple this size. Best reasonable offer.

Contact Fred Chael: 816 561-9036

Special Member Benefit from:

Plans NOW

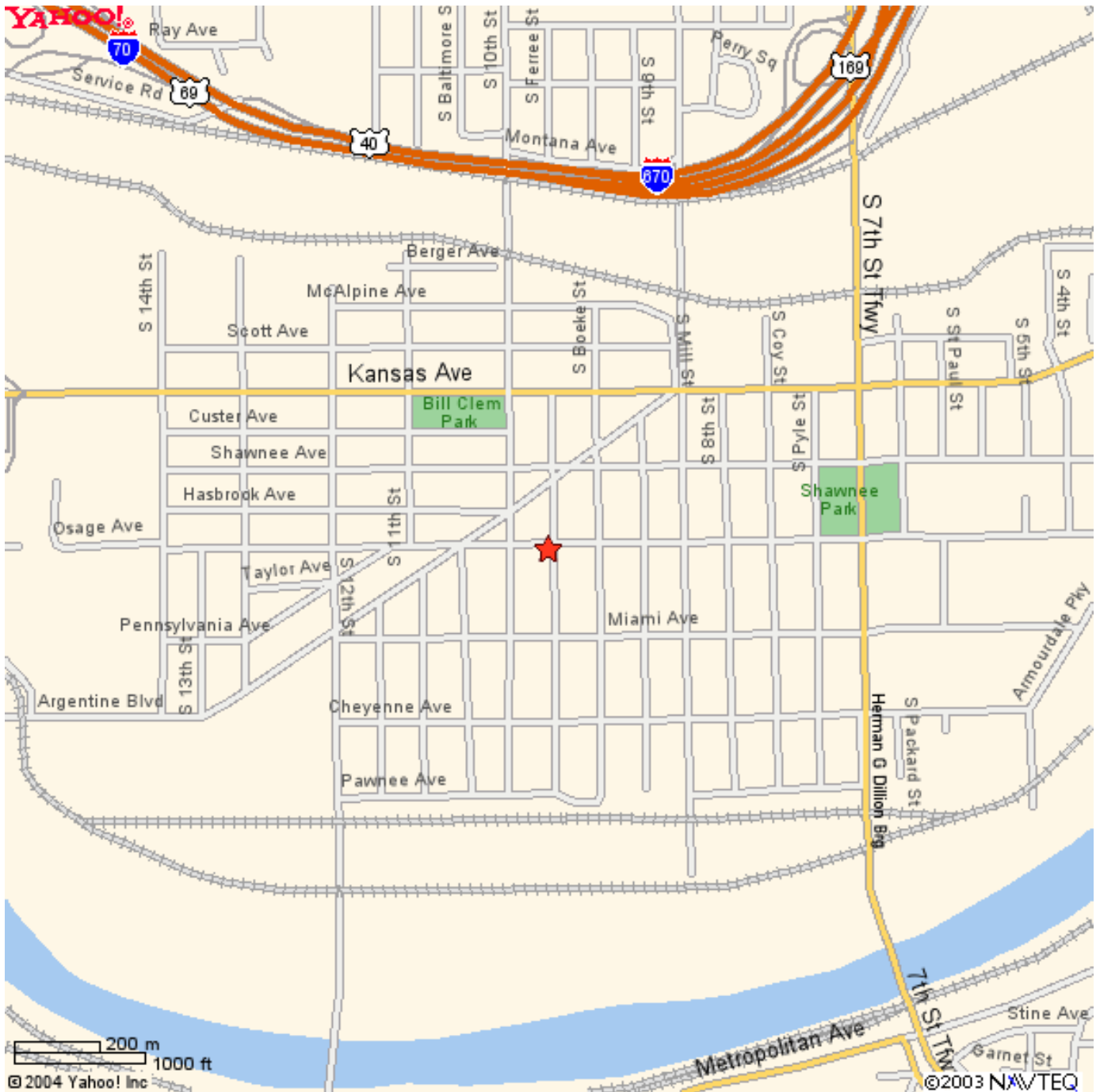
Join the PlansNOW Treasure Hunt and win TOOLS!
Visit PlansNOW.com and click on the PlansNOW Pirate for details.

And while you're there, use your 15% discount on all the plans and techniques in the store.

Your e-coupon word is: KCGuild

Read more about our newest Sponsor on our web site or visit them at: www.PlansNOW.com

Habitat for Humanity Project Location Map



Mentor Sessions

- **John Freeland Jigs** - October 2nd (9am)

Anniversary Cookout

- Date has been set for October 16th.

Bus Trips

Wood Magazine:

- Last chance to get on the bus for October 9th. A few seats still available.

Member to Member

Wayne Wainwright

Sander Stand



My random-orbit sander sees a lot of use.

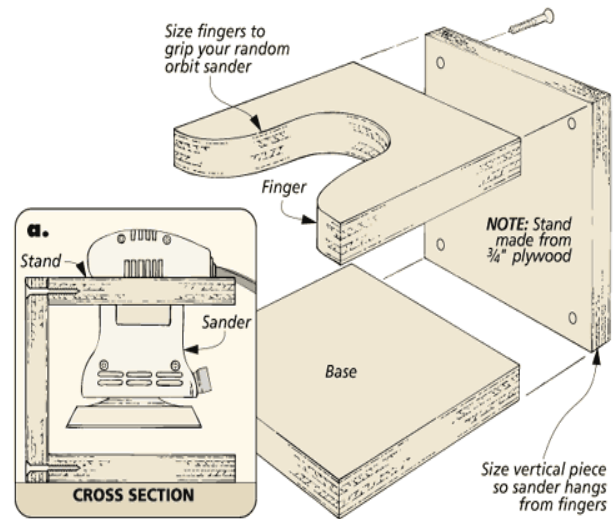
But I always found it annoying that I couldn't just set it down on the bench after turning it off.

I would end up wasting time holding the sander while the pad stopped spinning. Finally, I decided to take the bull by the horns and find a solution.

As you can see from the drawing above, what I came up with is pretty simple but also pretty effective.

It's just a stand made from scraps of plywood that I can "drop" the sander into once I turn it off.

The key to the stand is the top plate with its two



"fingers" that wrap around the sander to suspend it above the base.

You'll need to "custom-size" this piece to fit your particular sander.

And then just make sure that the stand is tall enough to hold the sander above the base.

Now when you have your sander in hand, you'll be getting the job done, not cooling your heels.

Printed by permission of: © August Home Publishing Co.
All rights reserved. For more tips like this, visit:
www.WoodworkingTips.com

Want to help cut guild monthly costs? Consider receiving the newsletter via email. It is faster and comes in color. If you are interested, please send an email to Wayne Wainwright at: wwrig@kc.rr.com, or add your email to the Attendance list at the monthly meetings.

Newsletter Deadline: 1st of the month:

**Please send all submissions for articles, tips, want ads announcements and anything else to Wayne Wainwright:
816 453-1073 email: wwrig@kc.rr.com**

4214 N Brighton Ave KC. MO. 64117

Member of the Month

Brian Kemp

Erl Poulin



What is your specialty in wood-working?

Primarily outdoor furniture, garden benches, porch swings etc.

How many years have you been woodworking?

Since childhood - I recall making a "Scratch-Backer" (Back-Scratcher, I know now!) for Mother as a birthday present when I was five years old.

What is your favorite hand tool and why?

My Grandfather's marking gauges and a spirit level made of rosewood and brass, and dating back to the 1870's

What is your favorite power tool and why?

The band saw - it was my first major tool purchase, and I've been able to cut most everything I need on it

What is your favorite wood to use and why?

I enjoy working with hard maple for indoor pieces, and Cypress or Ipe for outdoor items. It is very hard, and contains a lot of silica from the sandy soil in which they grow. This contributes to the decay and insect resistance of the woods

What is your most favorite project you have built and why?

The greatest joy comes from the work I've done on the annual Guild Christmas Toy Project.

What is the best deal you have gotten on a wood-working tool?

Grandfather's hand tools - they were all free!

What guild activities have you been involved in?

In the fifteen years I have belonged to the Guild, I've held virtually every elected office - except Treasurer and participated in most, if not all, of the exhibits and trade shows, seminars, bus trips, excursions and other events the Guild has sponsored

What has been your favorite guild activity?

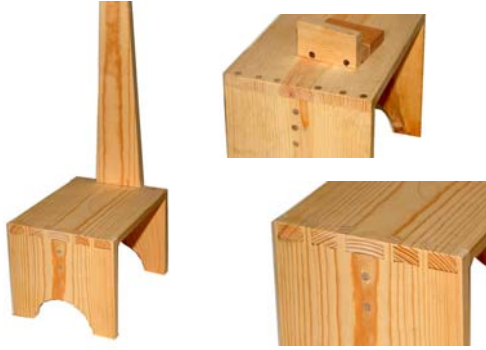
During the meetings, Show and Tell is always my favorite activity

What Shop Tip can you give us?

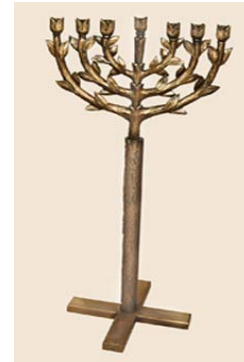
My shop tips are always along the lines of safety. When you are tired, get out of the workshop! That one careless moment of inattention is the one you will regret for the rest of your life. If you have to rush to complete a project, then your time was not well planned, and the item will not be ready for its' recipient, even if tomorrow is her seventh birthday

Thanks Erl for allowing us to feature you and your work this month!





Dave Kraatz's Shaker Steps



Bill Fitzgibbon's
Menorah



Dave Roth's Intarsia Letters and
Monstrance Cross



Anthony Harris'
Turnings



James Childress Silverware Tray

Show and Tell:

Bill Fitzgibbons made an Ark of the Covenant with angels and a menorah. Bill sketched a full size drawing of the menorah then he cut the wood for the menorah and gave it to his partner to do the final carving. The finish is gold spray paint with black rust-o-leum

Jim Owens made 2 chests, table, bench. The chest was made from walnut, the table made from oak and poplar. Bench oak. Tung oil finish and polyurethane Challenges were 2 chests and the weight.

Anthony Harris made a short spaghetti box made from ironwood. Finish Carnauba wax. Points of interest were the hand chase threads. Bowl made from Vera wood Lacquer finish. The ultraviolet light causes the color of the wood to change from tan to green. Spindle egg box African Blackwood and lace wood. Also a box in a box made from blood wood carnauba wax was the finish. The challenge was hiding one box into another. Anthony also made a spherical box made from Palm Nuts, African Blackwood, and Boxwood. It has hand chased threads and the challenges were black wood screws.

David Roth Brought in a Wooden Monstrance Cross made from walnut and cherry. Points of interest are: This cross is going to Korea. The finish is orange shellac, varnish, and Indian sand red wax. David also brought in some Intarsia letters of the letter M in the old English style of handwriting. The M's were different types of Maple, Silver Maple, Birdseye Maple, Spalted Maple, and Burl Maple. Finish is Medium wheat stain, orange Shellac, and varnish.

John Johnson: Item was a knock down desk made from birch and alder, with a polyurethane finish. Points of interest: no medal hardware, a tapered sliding dovetail to secure top to base, and it was hand planed.



P.O. Box 413922

Meeting Minutes

Visitors: Anthony Harris, Kevin brought in his wife Sandy

News:

- The Guild by laws were passed Wayne Suter made a motion to accept the by laws and Raymond Graham second it
- Russ Amos donated some books to our library. Thank you Russ
- Paul Twenter requested that you could turn in the inventory sheets of products that you may have at home

Tool Talk:

- Someone bought a 12" Forrest blade for the miter saw and says it works really well.
- Someone bought a Meredith shoulder plane: "right out of the box it worked well."
- Ross Amos bought a wooden aster 18-inch planer molder and it works really well. He just did 1,000 lineal feet of molding; it makes a lot chips and saw dust
- Erl Poulin bought a tele-step ladder and gave us a small demonstration of it.

Name tag door prizes

Kevin Mc Andrew the two-headed clamp, Mike Jones the WD 40, Leo Hernandez the micro file, David Roth a 220 hook up extension cord

Toy Project Raffle

Aaron Menning the sander, Russ Baker the long clamps, Joe McGuiness the lasers, George Dixon air hose, Paul Twenter the carving set, Robert King the extinguisher, George Rexroad the hand plane

Trent Glamann: Medicine Cabinet made from oak. The finish was a custom color stain and brush on polyurethane. Points of interest: first time making raised panel doors; panels had arches on the doors.

Dave Kraatz: Shaker Steps Points of interest were the three different ways to make them. One by Ten six foot long and make a shaker Step. First one is made with dovetails. The second one was made with Miller Dowels, and the third one was made with sliding dovetails.

Paul Anderson brought in a picture of a plaque carving that Paul wife's Maria made for a bishop in Turkey on the Bishop's 50th Anniversary for being a priest. Also Paul brought in three picture frames he has made. All three were made in different type of joints and different shapes and forms for the frame.

James Childress showed us a silverware tray made from Ponderosa Pine. It has a Bartley's gel stain, Pennsylvania cherry. The challenges were cutting compound dovetails and through tenons.

Russ and Sean Amos brought in a mini pool table made from Bal-

Calendar

Executive Meetings, 7:00pm Kansas City Public Library 1410 W 10th St. KC MO 64105

Guild meetings, 7:00 p.m., Jacob's Well Church, 1617 W. 42nd St., To reach us "during the meetings, call: KCMO. (816) 561-8177

Executive Meetings

Guild Meetings

2004

January 20th
February 17th
March 16th
April 20th
May 12th
June 9th
July 14th
August 11th
September 8th
October 13th
November 10th
December 8th

January 21st
February 18th
March 17th
April 21st
May 19th
June 16th
July 21st
August 18th
September 15th
October 20th
November 17th
December 15th

All members are welcome at any board meeting. A call to one of the Officers is all that is necessary.

tic birch. Points of interest are the felt top and a ball return. The challenges were making the ball return.

Erl Poulin brought in pictures of the signs he built for Grace Church. The signs were made from Ipe wood. The finish is a UV Plus. The challenge was working with Ipe wood. It is a dense wood and is hard on the tools.

Some important Safety Show and Tell items:

Bill Webb showed us a photo of a feather board and switches. The points of interest are safety.

Jerry Jennings brought in a cloth rag with a mineral spirit and polyurethane finish on it and showed how the chemicals started to scorch his shop rag. Make sure to dispose your shop rags correctly so they don't catch on fire when left unattended.