



Wood Words

Kansas City Woodworkers Guild www.kcwoodworkersguild.org

Volume 19 Issue 5

May 2001

Guild Meetings at:
Roanoke
Presbyterian Church,
1617 W. 42nd St., KCMO

May Raffle: Will be announced at the May meeting

Please thank associate members; Paxton's and Woodcraft, for supporting our toy project.

INSIDE THIS

Presidents	1
Program	2
Pictures	3
Editors Notes	4
Shop Safety Member to Member	5
Minutes	6
Show & Tell	6
Calendar	6

DIRECTORS-OFFICERS:

President	Dave Kraatz 816 436-3246
Vice President	Gene Caples 816 452-6379
Secretary	Bill Webb 816 792-8205
Treasurer	George Dixon 816 781-8023
Director mentor prg.	David Roth 913 338-2433
Editor	Wayne Wainwright 816 453-1073
Circulation	George Dixon 816 781-8023
Video	Don Kruse 913 441-3484
Books Toy Proj.	Erl Poulin 816 753-4121
Director	Jim Bany 913 341-3559
Director	Neal Shoger 816 781-4000
Director	Jim Ramsey 913 764-8983

Next Meeting Wed. June 20th, 7 PM
Program: Basic Wood Joinery

**Wear your name badge,
Win a prize!**

Hot News:

**Thanks to the 48 members who are receiving their newsletter via e-mail.
It "has" made a difference!**

Sawdust: The Presidents Corner

Dave Kraatz

Happy New Year! It certainly sounds strange to hear that exclamation at this point in the year, but it is true for us as a guild. It marks the point in the year where we say a big THANK YOU to some of our officers who are vacating and to some new officers who have volunteered to help us guide the guild business and calendar of events.



As past Vice President, Bob LaDue has provided us with several years of monthly programs along with organizing our spring woodworker seminars. Thank you Bob for doing this work for us. We will miss

your help, but we are glad that you have agreed to continue working on the 2002 spring seminar.

Thank you to Gene Caples, our new Vice President for stepping up to a big job. Thank you to David Roth, our new Director, who has agreed to lead the Mentor program. David has some new ideas for emphasizing our mentor activities.

Neal Shoger likes being an officer so much that he agreed to stay on as Director to fill the second year of Dick Woodhouse's term. Thanks for your help Neal. To the remainder of the Executive Board, George Dixon, Bill Webb, Wayne Wainwright, Erl Poulin, Don Kruse, Jim Bany and Jim Ramsey, who agreed to continue serving us, I appreciate

you help. You make the wheels turn and we are dependent on your leadership.

I challenge all of our members to meet our officers and let them know your interests for the guild and learn how you can become involved to help them.

Our new tool talk section
(Continued on page 2)

**Thank you to
vacating and new
officers!**

PLEASE PATRONIZE OUR ASSOCIATE MEMBERS

	Clarence Teed Memorial
	Paxton Woodcrafters 816 483-0659
	Woodcraft Supply 913 599-2800
	Strasser Hardware 913 236-5858

(Continued from page 1) *Presidents Corner*

of the meeting, the brainchild of Jim Bany, is really catching on with you. I was glad to hear your participation and reports on your experiences with your new and old tools. Keep up the good work. This is valuable input for those of us who might be considering a new tool buy.

Thank you for your continued participation in the monthly "Show and Tell" part of our meeting. This is a very important time for you to show off your latest project and convey the special tips and techniques that were used to make it. I always learn something from you and I am continuously reminded of the high level of experience and skill of our members.

Finally, I must tell you that I was completely awed by Jim Bany's fine workbench that he built and explained during his program. I was a little miffed that he did not use a handplane to flatten the top, but the widebelt sander seemed to turn out a good result also. Jim's bench is a fine tool and I am sure that he will enjoy using it in his woodworking.

I am looking forward to our May meeting to continue our skill building emphasis and to spend some more time sharing our woodworking experiences. Please come and

be with us and don't forget your "Show and Tell" project.

Thank You

The Guild wishes to extend our sincerest Thank You to Margo Barrick for the generous gift of the magazine and book collection of her late husband, Jim Barrick. The collection includes copies of Fine Woodworking, Woodsmith, American Woodworker and Wood magazines covering several years. The Guild executive board, in our April meeting discussed what would be the best use of this material. The Board decided that the Fine Woodworking and Woodsmith volumes would be retained for reference in the Guild library for the use of all members. The remainder of the collection consisting of American Woodworker and Wood would be made available for sale to the membership and the proceeds would be deposited in the

Program:

Bill Webb

Jim Bany showed his new workbench. It is 64" x 25" (ant) made to suit his height. He used "brown" maple, which is hard maple with some darker portions.

He was able to get it at 1/4 to 1/3 the cost of the all white hard maple at liberty hardwood. Edges are all 4" deep. He bought it rough and had to

plane it all himself. The top is glued together with Titebond II. He had a friend with a drum sander finish the top.

Jim provided for dog stops. The holes are sloped at 2 degrees. He had metal dogs once and damaged a plane blade when he hit one of them. He now makes it a point to use wooden dogs only.

He installed two vises, one on the end and one on the side. He had to modify one of the vises to fit. Both vises have a quick release feature. Jim asked for finish suggestions. Someone suggested Watco Danish oil as a good choice.

He used mortise and tenon joints for the stringers with black walnut dowels for locking. The top is



lagged to the legs. It's a very solid (and heavy) bench.

It looks great Jim. Thanks

Shop Safety

Jim Ramsey

Accident Description

I had just purchased the 3 1/2 hp router and wanted to see it do something. I took a 3/4 inch dado bit adjusted it to about 1/2 inch deep and started a "free hand" cut into an old and moldy piece of counter top found in the shed. The router did a "climb-cut" and twisted sideways in my hand. As it did so it blasted me in the face with debris from the cut. My glasses acted as my safety glasses but I instinctively turned my head. That allowed the debris to come in from the side of my glasses.

My right eye was hit pretty good with dust. The dust consisted of particle board and it's gluing agents and mold covered Formica. The incident required medical attention and considerable discomfort for about a week. My eye is okay now.

Advice to other Woodworkers

I figure I made three errors on this fiasco. Number one, I should not have used the router bit set for a hog cut. Number two I should have used either an edge guide or clamp guide but no free-hand attempt should be made with a router this powerful. Number three, I didn't ask myself a question I have relied on for years to keep me out of trouble. "What if". My eye-glasses would have protected me from this stupid incident had I not turned away and allowed the dust in the side area.

Accident Description

I was using a table mounted router to round the edges of the slats of an outdoor setting chair. The safety guide was not on. As I began to pass the timber over the bit from right to left a small defect grabbed. It kicked back and dragged my left hand across the bit. Three fingers and my thumb were badly damaged, my ring finger the worst. It was very messy. After around 15 stitches and months of re-

covery I have scars, a deformed nail on my ring finger and most of my movement back in them.

Advice to other Woodworkers

ALWAYS use all of the safety guides and other implements. It only takes a moment, you save a lot of blood and body parts- so do it.

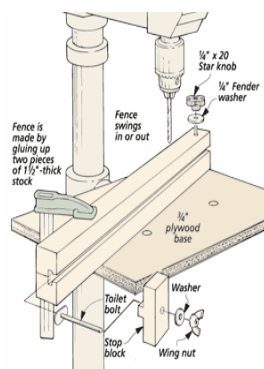
Here is one from Bill Webb

Only three stitches This Time. I was cleaning up a small piece of work by using a chisel. Unfortunately the chisel in my right hand pointed toward my left thumb. The wood gave way so easily and the chisel stopped in my thumb after slicing in about 3/8". It was worth three stitches. The fix is very simple. Mount the wood piece in the vice and work with the chisel pointed away from all fingers and thumbs.

Printed by permission of: Woodworking.org.
All Rights Reserved. For more tips like this, visit www.Woodworking.org

Simple Drill Press Fence

In the past, I used to just clamp a board to my drill press table whenever I needed a fence. But trying to position the fence was awkward. So I came up with a fence design that is easier to use and incorporates a stop block.



One end of the fence is attached to a plywood base with a carriage bolt and a threaded knob. This allows you to swing the fence in or out. The "free" end of the fence is then secured to the

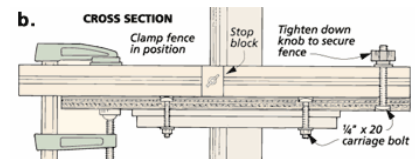
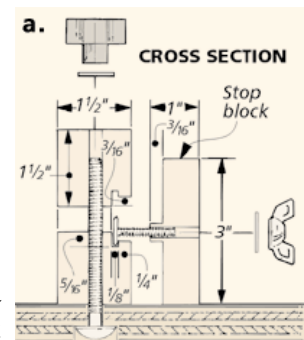
Member to Member

base with a small clamp, see the drawing below.

The fence is made out of two pieces of 1 1/2"-thick stock. But before gluing them together, I cut a groove and a rabbet along one edge of each piece, see detail 'a.' This creates a slot for the stop block and toilet bolt when the two halves of the fence are glued together.

The base is just a piece of 3/4"-thick plywood that is mounted to the drill press table with carriage bolts, see detail 'b.'

The stop block has a tongue that rides in the slot on the fence. To create the tongue, rabbets are cut along the top and bottom edges of the block. (To be safe, you'll want to



start with an extra long blank.) Then a hole is drilled through the block to allow for a toilet bolt, washer, and wing nut

Printed by permission of: © August Home Publishing Co. All Rights Reserved.
For more tips like this, visit www.WoodworkingTips.com



P.O. Box 413922
Kansas City, MO. 64141

Upcoming Programs

April: Making a Work Bench
May: Basic Wood Joinery
June: Dovetail Joints
July: Making and Fitting Drawers
August: Choosing wood for your projects
September: Saws: Band, Table, Scroll
October: Planning designing and making a project

Minutes

New Members & Visitors;

Welcome; Visitors and new members; Joe Lesco, Phil Young, Sal and Rick Hetherington

News items:

Dave Roth has agreed to be the new mentor program manager.

Someone needs wood worker help to restore a 1939 'Woody' sedan. Another person needed help on finishing Alder wood. Someone offered that Alder finishes similar to cherry. Chris Kunzle needs to know where he can buy a one-millimeter Allen wrench key.

Tool Talk:

Question on an Inca twin linear fence. "Woodpeckers" is a vendor of Inca tracks. Someone has burned out two motors on their delta 18" drum sander. Many problems have been reported. Another person reports that the 16" Ryobi drum sander is a good value. Also someone says their arrow stapler works great for 1" brads.

Also another person reports that their Dayton pneumatic brad nailer is also good. Someone bought a laser-cutting guide for their chop saw and it's not all it's cracked up to be. Another person reports problems with their 20-gallon DeWalt vacuum. Cordless drill batteries purchased at interstate battery co. Have a 50% batting average, one he bought was good, one was bad. Better luck next time.

Show and Tell

Troy Simonton showed us a beautiful hammered dulcimer made of oak, Mahogany and maple. Finished with wipe on Minwax poly. Joinery was the biggest challenge on this project.

Fred Chael made himself a dovetail jig from Woodsmith plans.

Calendar

Executive Meetings, 7:30 pm At Fred Chael's home, 4821 State Line Road, KCMO.

Guild meetings, 7:00 p.m., Roanoke Presbyterian Church, 1617 W. 42nd St., KCMO.

Executive Meetings

Guild Meetings

2001

January 16th	January 17th
February 20th	February 21st
March 20th	March 21st
April 17th	April 18th
May 15th	May 16th
June 19th	June 20th
July 17th	July 18th
August 14th	August 15th
September 18th	September 19th
October 16th	October 17th
November 20th	November 21st
December 18th	December 19th

Fred has agreed to lend his home for the monthly board meetings. All members are welcome at any board meeting. A call to Dave Kraatz or Bob LaDue is all that is necessary.

It is made of maple except the fingers, which were purchased. It took a great deal of patience to finish it.



Rod Hansen had a child block cart made of ash and walnut with the blocks made of eight different hardwoods. The finish on the cart was shellac and salad bowl finish on the blocks. Of particular interest was the adjustable height of the handle. The biggest challenge was ensuring a uniform size for all the blocks.

Russ Amos showed us his porter cable oscillating spindle sander that he rigged to fit in his router table. He also had a lighted picture box made of red oak. It was finished in poly and the light inside shows through the laser etched mirror.

Gene Caples showed us a drawer made of ash and pine and oak plywood with a



Rod Hansens child block cart



George Dixon's Woodwords display rack



Fred Chaels dovetail jig



Gene Caples hand cut dovetails



Bill Schechingers mirror frame



Troy Simontons Oak hammered dulcimer



Brian kemps John Wayne art



John Atkins burl maple bowl, walnut hunting knife handle finished with cooking oil and pine china painter wheel finished with a stain



Chris Kuzles "Lady in Cocobolo"



Brian kemps I Love U art



Roy Lutes pine stool



Russ Amos' Lighted picture box and Porter cable oscillating spindle sander



Tools



Bill Schechinger toy truck made of quarter-sawn sycamore and walnut.

Editors Notes

Show & Tell contd. From page 6

shellac finish. Of particular interest were the hand cut dovetails and the recycled wood. Gene also had photos of a cabinet and an inspection table he made.

John Atkins showed a burl maple bowl finished with a sealer and varnish, a walnut hunting knife handle finished with cooking oil and a pine china painter wheel finished with a stain. He reports it was a real challenge to keep his fingers away from the edge of the bowl while turning.

Chris Kunzle showed his "Oscar" turning he labeled "lady in Cocobolo". Amazingly the material was Cocobolo and was finished by buffing and waxing. It was done by three axis turning.

Roy Lutes had a small stool made of pine scrap for use in a pre-nursery or a nursery school.

Frank Layne showed an old cookie mold with the key word being "old".

Howard Johnson had a photograph of a full size headboard made of 5/4 red oak, finished with water-soluble Minwax.

Jim Ramsey had a veneer inlay picture, which he obtained in

kit form. It was finished with Bartley's gel stain.

Brian Kemp showed a piece of art depicting John Wayne. It was made of 1/4" birch plywood with a 3/4" pine frame. The frame was finished in dark walnut and the rest in golden pecan.

He also had a piece that read, "I LOVE U". The base was 3/4" red oak and 3/4" 1 1/4" aspen heartwood was used for the words. Finish was Minwax natural and satin poly. The greatest challenge was the cutting of the letters.

Bill Schechinger showed a mirror frame made of red oak and a toy truck made of

Elections & News

Dave announced that some magazines were given to the guild. The inheritance will be distributed as follows: the fine wood working magazines will be placed in the library for checkout like books and the rest of the magazines will be sold for 50 cents apiece.

Bob LaDue announced that Mario Rodriguez will be our

featured lecturer at next springs seminar which will be held in march.

Jim Ramsey showed the tools for the raffle: a wheel marking gauge, four chisel set and a four piece "Insty bit" set.

Grab bag items are needed. You are invited to see if someone else can make use of your 'white elephant'.

Election of officers:

Gene Caples was nominated for vice president and Dave Roth was nominated for a director.

It was moved and seconded that these nominations as well as the balance of the slate of officers be accepted by acclamation. The motion passed. It was moved and seconded to accept the whole slate of officers. The motion passed.

This years officers are:

Dave Kraatz - President
Gene Caples - Vice President
Bill Webb – Secretary
George Dixon – Treasurer
Wayne Wainwright – Editor
Erl Poulin – Books
Don Kruse – Videos

Directors:

Jim Bany
Neal Shoger
Jim Ramsey
Dave Roth